



QUILT MUSEUM AND GALLERY • YORK

Opening Times 2012

14 January – 1 December

Monday – Saturday 10.00 – 16.00 (last admission 15.30)

Closed Sundays

The Museum closes during exhibition changeovers, 29 April – 3 May and 2 – 6 September. Please check the website or contact the Museum for details.

Museum Admission

Gift Aid Admission: Adult £6.60, Concession £5.50,

Quilters' Guild member £3.30

Standard Admission: Adult £6.00, Concession £5.00,

Quilters' Guild member £3.00

Children under 16 free (accompanied by an adult), 10% discount for groups of 10 or more.

Annual passes available, please enquire for details.

Access

If you have a particular access need please contact us in advance of your visit.

Ramped access is available from Peasholme Green through the garden to the Museum entrance.

- Ramped access throughout ground floor
- Platform lift to first floor gallery spaces
- Accessible toilet
- Assistance dogs welcome
- Induction loop



Directions

The Quilt Museum is located on Peasholme Green, York opposite the Black Swan pub.

Parking: The nearest car parks are at Haymarket, Foss Bank and Shambles. The Monks Cross Silver Line (9) and Grimsdon Bar Yellow Line (8) Park and Ride buses stop on Peasholme Green.

Contact Details

Quilt Museum and Gallery

St Anthony's Hall, Peasholme Green,

York, YO1 7PW

01904 613242

admin@quiltersguild.org.uk

www.quiltmuseum.org.uk

The Quilters' Guild of the British Isles

The Museum is managed by The Quilters' Guild of the British Isles, a national membership organisation and registered educational charity 1067361.

www.quiltersguild.org.uk



www.quiltmuseum.org.uk



Make the most of your visit

Be inspired by the fabulous fabrics, colours, designs and stories of the textiles in the changing exhibitions on display. The Museum showcases some of the most exciting contemporary textiles alongside historic items from The Quilters' Guild Collection.

Meet the artist, learn a new technique or see behind the scenes. For further information about events

www.quiltmuseum.org.uk/events

Our shop stocks a wide selection of cards, gifts and books along with thread and fabric for your own projects.

www.quiltmuseumshop.org.uk

The Museum is situated in St. Anthony's Hall on Peasholme Green. The Hall is part of a larger complex including a sensory garden, Le Langhe Italian delicatessen and restaurant and the New School House Gallery.

front cover 'butter' by Marianne Bender, pink wholecloth quilt (detail)

by Amy Emms

inside top left: Aberdeen 1' (detail),

by Pauline Burbridge.

inside bottom left: 'bitches'

by Marianne Bender.

inside top centre: Quilted hot water

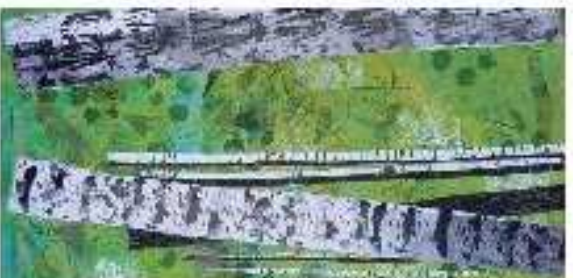
bottle cover by Amy Emms.

inside top right: Mosaic squares cot

coverlet, 1825-50 (detail).

inside bottom right: Pink wholecloth

quilt, by Amy Emms.



Exhibitions 2012

14 January – 28 April

'Decline and Revival'

Following the changing fortunes of patchwork and quilting throughout the 20th century.

'Layers'

A contemporary exhibition showcasing the work of the New Horizons textile group.

4 May – 1 September

'Celebrating Diversity'

An international exhibition of new quilts and textiles from the European Quilt Association.

'Small is Beautiful'

An exhibition of some of the smaller historic items in the collection, from tea cosies to cot quilts.

7 September – 1 December

Pauline Burbridge: 'Interpretations in Cloth'

A major international exhibition looking back at the work of one of the foremost textile artists working today.

'Amy Emms, North Country Quilter'

Amy Emms, North Country Quilter. An exhibition of the life and work of a prolific 20th century quilter.



Become a volunteer

The Museum relies on a dedicated group of volunteers. To find out about how you can get involved go to www.quiltmuseum.org.uk/volunteers

Education

The Museum offers educational visits for all ages, for further details go to www.quiltmuseum.org.uk/learning-centre

Room Hire

The Education Room is available for hire for meetings, training and workshops. Full and half day rates available. Go to www.quiltmuseum.org.uk/roomhire

Sign up to our e-newsletter to receive regular news from the Quilt Museum www.quiltmuseum.org.uk



The information contained in this leaflet was correct at the time of going to press.